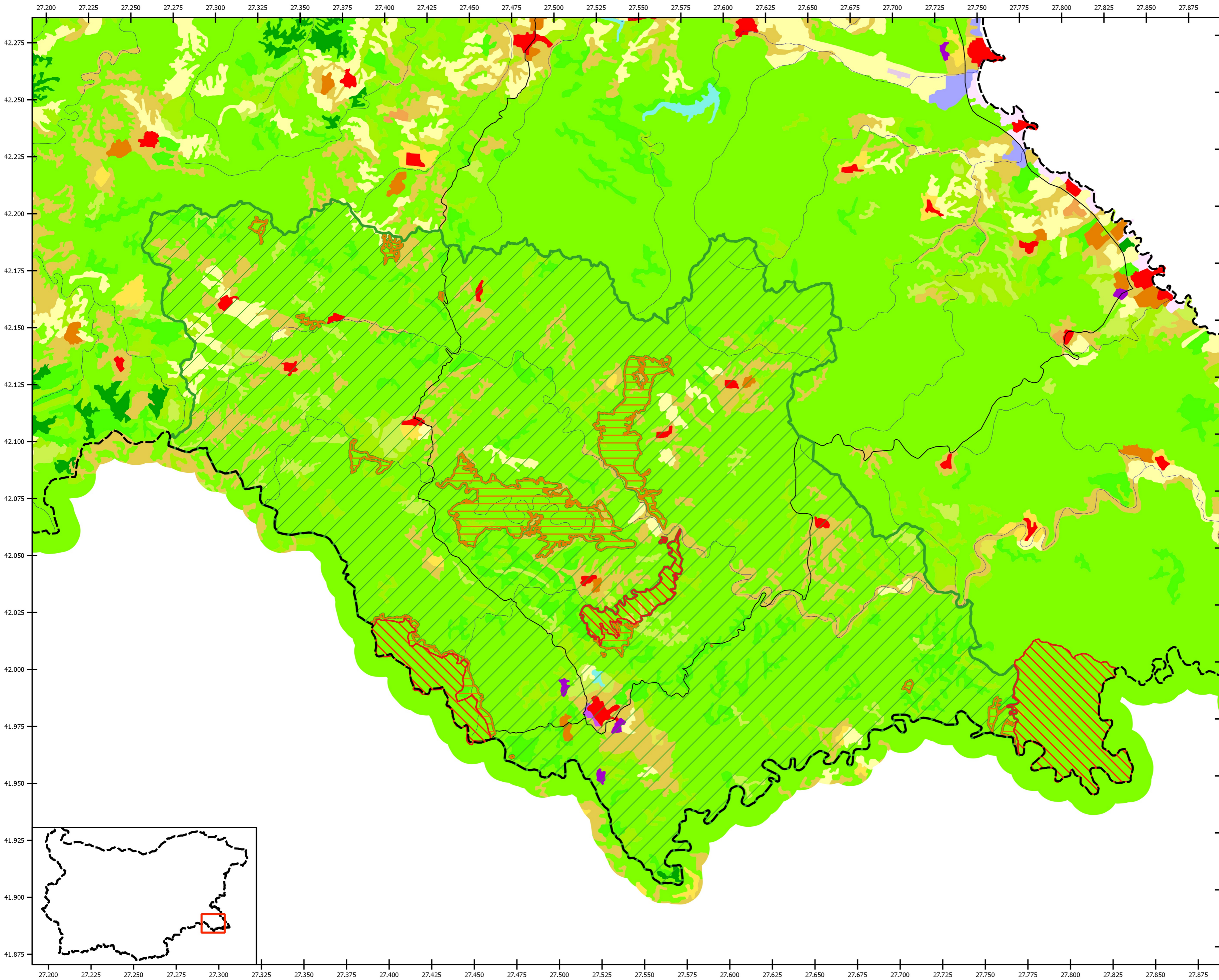
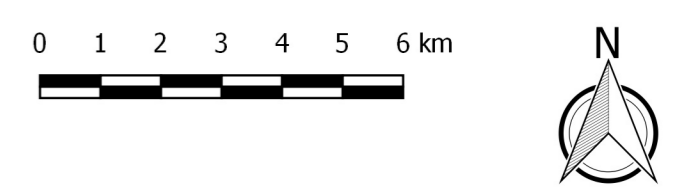


Biosphere Reserve Uzunbudzhak - Corine Landcover



- Legend**
- Core zone
 - Buffer zone
 - Transitional zone
 - Corine Landcover classes**
 - Discontinuous urban fabric
 - Industrial or commercial units
 - Road and rail networks and associated land
 - Airports
 - Mineral extraction sites
 - Dump sites
 - Sport and leisure facilities
 - Non-irrigated arable land
 - Vineyards
 - Fruit trees and berry plantations
 - Pastures
 - Complex cultivation patterns
 - Land with agriculture/natural vegetation
 - Broad-leaved forest
 - Coniferous forest
 - Mixed forest
 - Natural grasslands
 - Transitional woodland-shrub
 - Bare rocks
 - Sparsely vegetated areas
 - Burnt areas
 - Inland marshes
 - Peat bogs
 - Water courses
 - Water bodies
 - Main river
 - Main road
 - Bulgarian national border



This map is produced by the Association of Parks in Bulgaria in the framework of the project "Linking nature protection and sustainable rural development", financed by the Bulgarian Swiss Cooperation Program via the Reform Fund Linked to Civil Society Participation in 2016.

CRS: WGS 84 / UTM zone 35N
Data sources: MoEW, MRDPW, EEA

